

**Cyclin B1 Antibody**  
**Rabbit mAb**  
**Catalog # AP90415****Specification**

---

**Cyclin B1 Antibody - Product Information**

Application	WB, IHC, FC, ICC, IP
Primary Accession	<a href="#">P14635</a>
Clonality	Monoclonal
<b>Other Names</b>	
CCN-2; CCNB; CCNB1; CCNB1-RS1; CYCB; CYCB1; G2/mitotic-specific cyclin B1;	
Isotype	Rabbit IgG
Host	Rabbit
Calculated MW	48337 Da

**Cyclin B1 Antibody - Additional Information**

Dilution	WB~~1:1000 IHC~~1:100~500 FC~~1:10~50 ICC~~N/A IP~~N/A
Purification	Affinity-chromatography
Immunogen	A synthesized peptide derived from human Cyclin B1
Description	Essential for the control of the cell cycle at the G2/M (mitosis) transition. a member of the highly conserved cyclin family, whose members are characterized by a dramatic periodicity in protein abundance through the cell cycle. Cyclins function as regulators of CDK kinases.
Storage Condition and Buffer	Rabbit IgG in phosphate buffered saline , pH 7.4, 150mM NaCl, 0.02% sodium azide and 50% glycerol. Store at +4°C short term. Store at -20°C long term. Avoid freeze / thaw cycle.

**Cyclin B1 Antibody - Protein Information****Name** CCNB1**Synonyms** CCNB**Function**

Essential for the control of the cell cycle at the G2/M (mitosis) transition.

**Cellular Location**

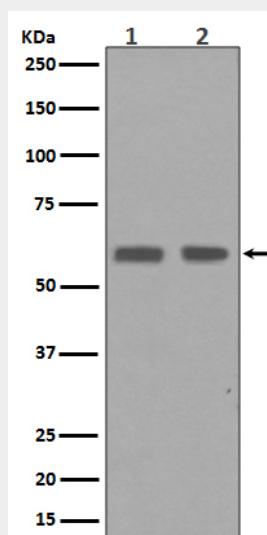
Cytoplasm. Nucleus. Cytoplasm, cytoskeleton, microtubule organizing center, centrosome

### Cyclin B1 Antibody - Protocols

Provided below are standard protocols that you may find useful for product applications.

- [Western Blot](#)
- [Blocking Peptides](#)
- [Dot Blot](#)
- [Immunohistochemistry](#)
- [Immunofluorescence](#)
- [Immunoprecipitation](#)
- [Flow Cytometry](#)
- [Cell Culture](#)

### Cyclin B1 Antibody - Images



Western blot analysis of Cyclin B1 expression in (1)HaCaT cell lysates; (2)HepG2 cell lysate.